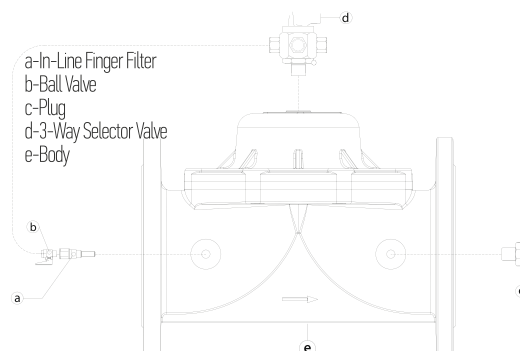
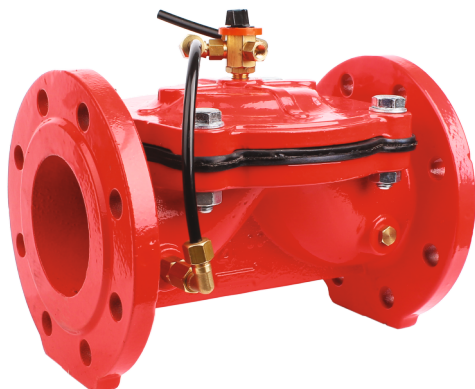


GF16MV40



Product Description

BKV "BSV" Model Pressure sustaining control valves are designed to keep inlet pressure stable. When system pressure is higher than the adjustment pressure, inlet pressure is kept stable by opening the valve. Without being affected by pressure waves, it keeps the inlet pressure stable. It is assembled in the outlet of filtration systems and provides effective backwashing-flushing of the filtration system.

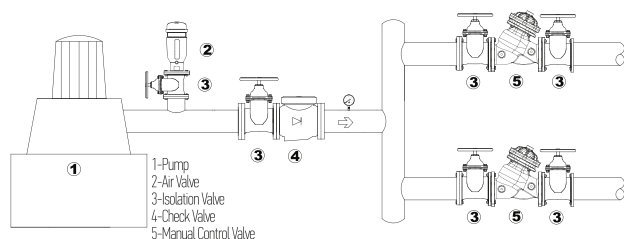
Assembly

- 1.Valve can be assembled horizontally or vertically.
- 2.Valve must be on the same level with mainlines during installation.
- 3.Install the valve on direction with arrow shown on the valve.
- 4.Isolation valves (gate valve, butterfly valve, silt trap etc.) could be installed before or after the installation.

Maintenance

- 1.Check and clean the in-line finger filter located on valve inlet and adjusts it accordingly with the quality of water. Unless the water is really dirty, do not clean the filter more than a few times a month.
- 2.Check inlet pressure value periodically and check valve performance.

Typical Application



Adjustment

Step 1: The manual valve can be activated by the selector valve, Turn the handle to the direction of ports 'Open' or 'Close' for manual overriding of the valve.

Technical Characteristics

- 1.No need for extra energy by running on pressure network
- 2.Easy maintenance
- 3.Low Cavitation risk

Order Information

Please provide the following information below:

- Maximum flow rate : m^3/h
- Maximum network/line pressure : bar
- Main line size : mm
- Valve connection type : -----

Available Valve Sizes	1 1/2" DN40	2" DN50	2 1/2" DN65	3" DN80	4" DN100	5" DN125	6" DN150	8" DN200	10" DN250	12" DN300
Product Code	GF16MV 40	GF16MV 50	GF16MV 65	GF16MV 80	GF16MV 100	GF16MV 125	GF16MV 150	GF16MV 200	GF16MV 250	GF16MV 300